



IceBreak Server...

... a new strategy for web development.

With IceBreak it is possible to combine the iSeries stability with the flexibility of the Internet.

IceBreak makes it possible to change an application based on "5250-technology" to web-technology – without changing the business logic.

RPG and COBOL programmers knowledge becomes web active

Programmers with RPG or COBOL skills only need to acquire new knowledge about HTML. This is a huge advantage compared if the same logic must be rewritten in a brand new language. With IceBreak the learning curve starts with HTML.

Fast web design

Web designers and RPG/COBOL programmers can easily work on the same application. This way the business logic can be handled by the RPG/COBOL programmer and the web design handed over to a designated web designer.

Excellent performance

IceBreak runs in it's own server environment, at an extreme speed, since IceBreak do not use any IBM technology, such as Java, to run the WEB applications.

IceBreak runs in batch mode, which means that it does not require any interactive processors. Compared to other solutions, this reduces the cost for buying hardware



Access the application directly from a PDA or mobile phone

IceBreak supports PDA, mobile phones and other handheld units supporting XML.

Barcode scanners with a build in PDA gives direct access to update stock or online access to stock information and other systems.

WEB Services

IceBreak also supports XML web services as known in the .NET technology. Use this feature to offer extra services on web-pages or in internal applications, having IceBreak interactively collecting data and calculations from other web-pages.

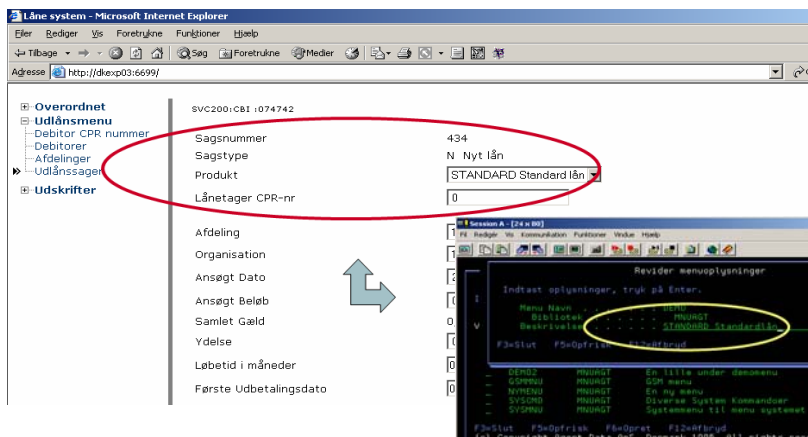
WEB document portal

With IceBreak it is possible to give access to all documents stored in the network via a WEB browser. The high speed ensures fast and reliable access to the documents. This technology can be used e.g. to give the customers access to own documents or to have own personnel have a joint document portal.

ASP technology

The key to the perfect cooperation between HTML and RPG and COBOL is ASP – Active Server Pages. This technology has been used on Microsoft web servers for quite some time, however combined with IceBreak, the technology is now available for the most reliable and scaleable application servers on the market - iSeries and AS/400.

As mentioned before, IceBreak is compatible with all known tools for web-design; this ensures a flexible development phase.



Use existing web designer tools

IceBreak have no requirements for a specific web-design tool. Any web-designing tool, e.g. Microsoft FrontPage or Macromedia Dream Weaver or even notepad can be used.



The users say:

"iSeries experience can be used when programming web-applications"

"Many years of business logic code, written in RPG or COBOL, can be reused"

"It's easy to get started - the learning curve starts with HTML, and RPG skills becomes WEB active."

"The performance of IceBreak is outstanding"

"We can run a unlimited number of application even on the smallest iSeries."

"My iSeries applications become mobile with PDA technology"

"I had my first application webenabled within a hour"

"WEB design has never been easier"

The HTML code can be expanded to include ASP and is compiled online to a program object which can be executed on the iSeries or AS/400.

Changes in the application will be visible as soon as the change is stored in the IFS and the browser refreshes the file. Compiling of the program is done automatically via IceBreak, we call it JIT or "just in time" compiling.

The communication between the web-client and the server is based on well known technology, which has been developed and enhanced through the years.

And because IceBreak serves as a server, all applications are protected against hostile activity from the Internet.

Use existing development skills

AS/400 programmers with a minimum of HTML knowledge can develop IceBreak applications from day one.

In IceBreak it is possible to mix either Native RPG and Free RPG or COBOL with HTML, XML and Java Script in the same application source. This will have all types of programmers feel at home within the IceBreak development environment.

Wizard and tutorials

When installing IceBreak, a WEB page is automatically started, from which the user will be guided through an introduction to the application.

The tutorial included in the IceBreak-package offers easy-access for all users, whether we are talking new applications or conversion of existing RPG applications.

Handling Compile Time Errors

If compile time errors occur in the source preventing the compiler to produce the final program object, the Internet Browser will present you to a list containing program errors or warnings.

The posted list is bookmarked so you can click between the statements in the source where problems occurred. After the source is changed using your web design tool, the IceBreak server is ready to re-compile and execute the program object.

Handling Run Time Errors

If an application against your expectations should fail at runtime, traditional AS/400 or iSeries developers usually view through the Native job log generated by the operating system. The IceBreak server provides you with the same facility formatted in the Internet Browser.

There are several commands available to the developers in order to offer easy access to detailed system information.

Browser-based commands are very useful locating errors and warnings speeding up program development.



BlueSeries IceBreak Modules

The BlueSeries IceBreak application is based on 3 individual modules, which makes it possible to develop and run web applications directly on the AS/400.

The Web applications are developed in a mixture of HTML and RPG in any web-designer tool running under Windows, Linux or Mac. The three modules are:

Development Tool

The development tool, which requires some development experience, is given to vendors and developers free of charge, if they need the tool for developing applications for their customers. However if development is for own use, the company is required to purchase the module.

Runtime Server

In order to execute the web-application, IceBreak WEB Application Server need to be installed.

Apache Gateway

The Apache Gateway is an extra module, which enables external web-users to share BlueSeries IceBreak applications through a secure Apache Gateway

Minimum requirements

- OS/400 V5R1
- Active TPI/IP
- RPG/COBOL compiler
- Web design tool

The IceBreak product line ...

Enterprise

The IceBreak Enterprise allows you to build web applications on the i5, iSeries & AS/400 server platform. The Enterprise edition will let you develop and execute all types of web applications based on RPG, CL & COBOL. You can build new programs or enhance your existing applications.

Server

Using the IceBreak Server, it is possible to execute IceBreak programs - it is however not possible to change or amend the programs.

Inspire

The free IceBreak Inspire edition is a powerful tool for anybody who works with SQL and Queries. In an instant you can present your existing Query Reports in a spread sheet - in a browser on the WEB, or locally in your own Intranet. It is very easy to structure and organize your existing Queries. All Queries can be collected in different groups, making navigation a simple task. Users can access the queries via OS400 logon.